



## 67 Serpentine Road, Wirral, CH44 0AU Offers In The Region Of £110,000

 2  1  1  D

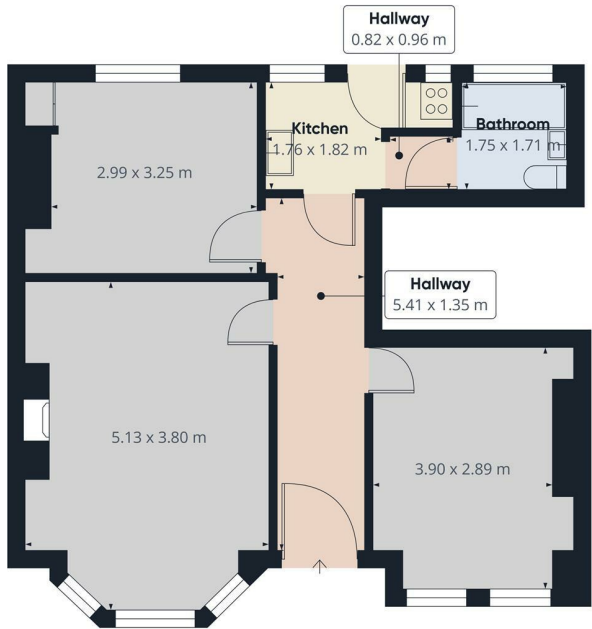
A welcome addition to the sales market two bedroom ground floor apartment situated in a highly sought after residential area. In brief the property comprises of two bedrooms bedrooms, one reception room, kitchen, bathroom and front and rear garden. The property also benefits from gas central heating and double glazing. Viewing recommended!

- Ground Floor Apartment
- Two Bedrooms
- One Reception Room
- Kitchen
- Bathroom
- Rear Garden
- Gas Central Heating
- Double Glazing
- EPC Rating D



### Viewing

To arrange a viewing on this property or require further information please contact one of our team on 0151 638 6313

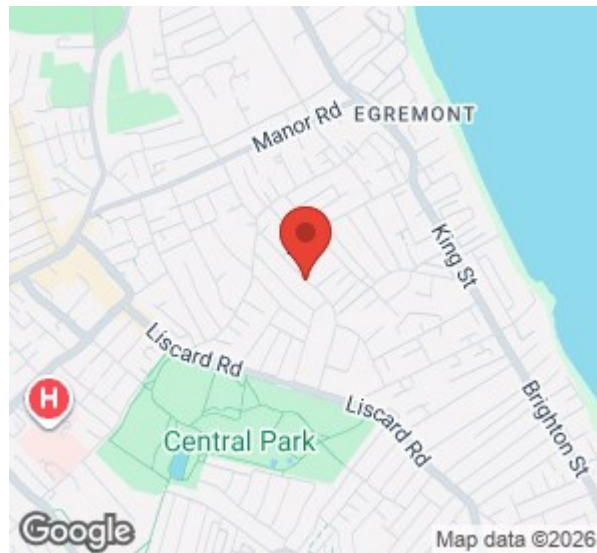


Approximate total area\*  
55.1 m<sup>2</sup>

(1) Excluding balconies and terraces

Calculations reference the RICS IPMS 3C standard. Measurements are approximate and not to scale. This floor plan is intended for illustration only.

GIARFFE360



**Energy Efficiency Rating**

	Current	Potential
Very energy efficient - lower running costs		
(92 plus) <b>A</b>		
(81-91) <b>B</b>		
(69-80) <b>C</b>		
(55-68) <b>D</b>		
(39-54) <b>E</b>		
(21-38) <b>F</b>		
(1-20) <b>G</b>		
Not energy efficient - higher running costs		
	62	74
<b>England &amp; Wales</b>	EU Directive 2002/91/EC	



These particulars, whilst believed to be accurate are set out as a general outline only for guidance and do not constitute any part of an offer or contract. Intending purchasers should not rely on them as statements of representation of fact, but must satisfy themselves by inspection or otherwise as to their accuracy. No person in this firm's employment has the authority to make or give any representation or warranty in respect of the property.

**93-95 Wallasey Road, Wallasey, Merseyside, CH44 2AQ**  
**T. 0151 638 6313 | E. management@bakewellhorner.co.uk**  
**<https://www.bakewellhorner.co.uk>**